

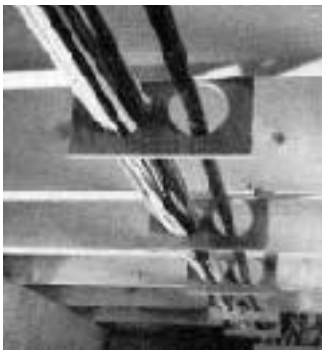
Adjustable Columns for Engineered Beams

by Clayton DeKorne



Wesure Weld manufactures medium and heavy-duty, adjustable columns for supporting LVL, glulam, and dimensional lumber beams. Unlike a simple screw jack (the kind that homeowners put in to assuage their fears), the Wesure support has a saddle that cradles the beam and provides full-bearing support, and rotational and lateral restraint. The columns adjust up to 4 inches in height with two double-threaded bolts that evenly distribute the load to the square-steel post. The square baseplate is designed to sit on a spread footing or pier (depending on soil conditions), and includes anchor bolt holes. Sizing for loads is based on the diameter and height of the columns. The 3-inch-square medium-duty columns can support loads up to 16,000 pounds at a height of 9 feet (or 11,000 pounds at 12 feet). The 4- and 5-inch heavy-duty columns can support loads up to 80,000 pounds at 9 feet. Prices start at about \$150 per column, and until distribution is in place, can be purchased from the manufacturer. For more information, contact Wesure Weld, 7139 40th St. SE, Bay #10, Calgary, Alberta T2C 2H7; 403/279-2440.

Just Say No Holes



Joist Savers — 1/4-inch plywood "holes" — might help keep your

plumber and electrician from turning your joists into lace. The idea seems like a good one, especially for avoiding holes in all the wrong places, such as the middle third of the span, near the bottom (tension side), or top (compression side), of joists and beams. But whether or not these are economical to buy — at about \$10 per dozen — is another matter. They might be. For more information, contact Jordan Building Products, c/o Ritter Creations, Box 17613, Dakin Farm Rd., Ferrisburg, VT 05456; 802/877-3690.

Full-folding Bifolds



How often have you installed a dryer in a utility closet only to have the open door smack into the bifold door? I hate that. And I've never been too fond of installing track-mounted bifold doors, anyway. But I do like the **Johnson Full Access Folding Door Hardware** because it allows bifolds to fold back 180 degrees and lie flat against the walls, giving you full access to the opening. Not only will you be able to fit the dryer in a smaller space, but you can appeal to your client's trendy taste for study nooks and hidden wet bars. The installation is fairly straightforward. The hardware kit includes jamb hinges, panel-connecting hinges, and a control arm similar to a door closure arm that holds the door in line when opening and closing. For more information, contact L.E. Johnson Products Inc., PO Box 1126, Elkhart, IN 46515; 800/837-5664.

Stainless Screws



Swan Secure

I've gotten several inquiries about sources for stainless-steel deck screws. I know of a few distributors who carry stainless-steel screws from unknown sources in 1 1/4- to 3 1/2-inch sizes: **Sea Sure Nail** (PO Box 669, Allenwood, NJ 08720; 908/528-6809), **Bear Creek Lumber** (PO Box 669, Winthrop, WA 98862; 509/997-3110), and **Jamestown Distributors** (PO Box 348, Jamestown, RI 02835; 800/423-0030). But I know of only one manufacturer — **Swan Secure Products Inc.** This company offers a square-drive, bugle-head wood screw that seems worth using as long as you are already going for the big bucks on a cedar or redwood deck. The square-drive is great, since it won't strip out or chatter. For exterior trim work, they offer a square-drive trim head stainless-steel screw, too. These seem like the way to go for toe-screwing balusters and handrails on exterior decks and porches, especially if you need to remove a section to get the clients piano in later on. For more information, contact Swan Secure Products Inc., 1701 Parkman Ave., Baltimore, MD 21230; 301/646-2800.

Perhaps not as durable as stainless-steel, but certainly a lot cheaper and better than hot-dipped galvanized screws, are **GrabberGard Ceramic-coated Screws**. The baked-on ceramic coating is reportedly tougher than any galvanized coating. I messed around with a few samples, and found the coating



GrabberGard

doesn't chip off the head when driven, like hot-dipped galvies will. The screws also seem to drive easier because of the slick coating. One type of screw they make features a self-drilling point. Just above the first few threads is a short section that has fluted cutters like a drill bit. It presumably bores a hole to the exact diameter of the shaft, eliminating a separate step for pre-drilling near the ends of boards. For more information, contact **GrabberGard**, 205 Mason Circle, Concord, CA 94520; 800/477-8876 or 415/680-0777 in Calif.

Hidden Stepstool



In the kitchen amenities department this month is the **Hafele Step Fix** — a foldup stepstool that hides away in the kickspace beneath a base cabinet. The Step Fix unfolds to a height of 16 inches (just high enough so the cook can reach the wine glasses in that high upper cabinet you've planned for) and collapses to four inches. The stool is made of a plastic-coated steel, has rubber treads, and will support 250 pounds. The face plate is 16-inches-long, and there are even built-in wheels so it doesn't drag across the new floor. For more information, contact **Hafele American Co.**, 3901 Cheyenne Dr., Archdale, NC 27263; 800/334-1873. ■