

Gutterless Gutters

by Sal Alfano

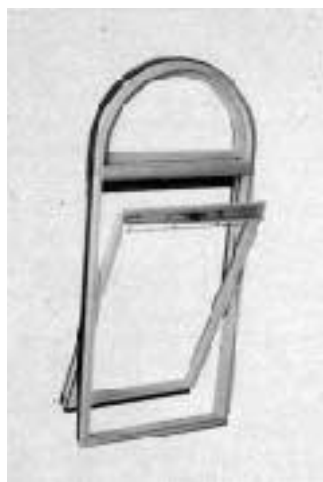
If you're tired of dealing with complaints about clogging and overflow in the gutter and downspout systems you install, consider replacing them with the *Rainhandler*. Instead of catching runoff from the roof, each 3x60-inch section uses seven 3/4-inch aluminum fins to break water falling off the edge of the roof into droplets. The fins are angled like louvers to guide



the water away from the fascia and disperse the droplets evenly onto the ground in a 3- to 5-foot band. Available in natural, white, or brown, the sections snap into aluminum brackets that should be screwed to the fascia at least six inches below the edge of the roof. Rainhandler costs about \$4/lf and can be ordered from Savetime Corp., 1285 Boston Ave., Bridgeport, CT 06610; 800/942-3004.

Rounding Out the Roof

A fixed-glass accent window from Velux, called the *Round Top Roof Window*, fits two sizes of the company's GGL roof window. Models GIR 450 (for GGL 410) and GIR 850 (for GGL 808) are constructed of solid wood, with double-pane, argon-filled, low-e glass. They are packaged separately and mount to the roof deck with L-brackets. The flashing kit (ordered separately) includes a special one-piece head flashing as well as flashing to cover the field mull between the round top and a new or existing GGL sky-



light. As with other Velux roof windows, a dado on the interior frame conceals the edge of 1/2-inch dry-wall. Currently, no shades or blinds are offered by the company for the round top. For more information, contact Velux-America, P.O. Box 5001, Greenwood, SC 29648; 800/888-3589.

A Better Barrier

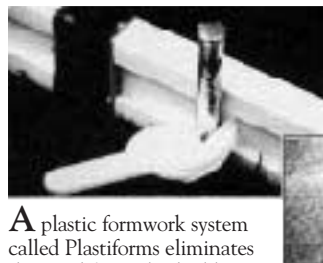


The number one byproduct of remodeling work is dust. Somehow, it manages to find its way into every corner of the house. We spend hours trying to contain dust by tacking or taping miles of poly to floors, walls, and ceilings, all of which goes to the landfill when the job's done. To remedy this situation, a remodeling contractor invented

the reinforced vinyl *Dust Door*. It uses velcro strips to anchor a reusable panel to door openings or archways. A large nylon zipper allows easy access without disturbing the airtight, dustproof velcro seal at the perimeter. In extra-heavy traffic areas or on long-term projects, you can also fasten the panels through metal grommets sewn into the top and sides. Each door panel has a job pocket on one side and an optional clear plastic window.

The Dust Door is 42 inches wide and matches 7-, 8-, or 9-foot ceilings. Other sizes can be special ordered. The door panels can be joined to 5-foot-wide wall panels to curtain off a work area within a larger room. This requires an L-shaped ledger fastened or braced against the ceiling. Velcro strips interlock at panel edges as well as along the ledger and down both sides to form a dustproof seal. You can seal the bottom with velcro, too, or just weight it down with a stick of lumber. Wall panels come in 8-, 9-, and 10-foot heights, but almost any size can be special ordered. List price for the Dust Door is between \$89.95 and \$129.95, and add-on wall panels list for \$124.95. Quantity discounts are available from D & L Designs, 524 Green St., Boylston, MA 01505; 508/393-7166.

Plastic Flatwork Forms

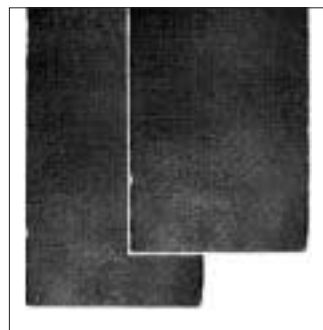


A plastic formwork system called Plastiforms eliminates the need for nails, double stakes, and form oil, according to the manufacturer. Made of extruded high-density polyethylene, the 2x4- and 2x6-inch-hollow forms come in lengths up to 16 feet. They snap together with molded plastic connectors factory-stapled to each end. A dovetail slot running the full length of each piece houses the removable cam-lock clamps used to secure the forms to stakes up to 3/4 inch thick. The plastic forms can be cut with a hand or power saw to remove damaged ends or shorten stock lengths. And if you cut a series of slots into one side, you can form

very small radiuses. Even without cutting, the manufacturer claims the 2x4 forms are flexible enough to follow a radius as tight as 3 feet. The system is especially useful for sidewalk or driveway forming, but it can be used for stairways as well.

Because the forms are light (about one-third the weight of wood), sections can be moved while still assembled. Silicon in the plastic gives the forms a non-stick surface that makes them easy to pull away from cured concrete. Concrete that hardens on the form can be loosened with a few taps. Suggested retail price for the forms is between \$2.95/lf (for 2x4s) and \$5.45/lf (for 2x6s). The cam-lock clamps retail for \$1.90 each, and aluminum I-beams that slide into the form to provide stiffness sell for 40¢/lf. For information, contact ROLA Industries, 44443 Fenhhold St., Lancaster, CA 93535; 800/358-3007.

Simulated Slate



A fiber-cement roofing tile that looks like slate is said to withstand freeze-thaw conditions better than the real thing. *Heritage Slate* is cured in a high-pressure steam autoclave to preshrink the material and improve its dimensional stability. The 12x24 slate is 3/16 inch thick and has a UL Class A fire rating. The material is available in three colors — black, gray, or green — that are factory-applied in an acrylic emulsion coating. The tiles weigh 390 pounds per square, when laid up with an 11-inch overlap, and should be installed with copper storm anchors, which the manufacturer also supplies. For a distributor in your area, contact Supradur Manufacturing Corp., P.O. Box 908, Rye, NY 10580; 800/223-1948. ■