

Products

by JLC Staff

Butt Buster

Your happy clients are relaxing in the fabulous new Great Room you built them, watching the morning sun streaming in — showing every coat of mud on every drywall butt joint in the room. Or what about the drywall hump in the wall behind that long run of granite countertops where a butt joint breaks on a stud?

Flat-Fast's *ButtHanger brackets* create a slight recess at a butt joint, allowing it to be finished like any tapered edge. The drywall is hung so the butt edge floats between framing members. A furring strip is attached to the ButtHanger brackets, and the drywall is screwed to the furring. Since the legs of the bracket are a little thicker than the furring strip, the butt joint is forced back behind the plane of the wall. Retail price: \$6.75.

Contact: Flat-Fast, Inc., 1122 Siddonsburg Rd., Mechanicsburg, PA 17055, 888/292-1002, www.buthanger.com.

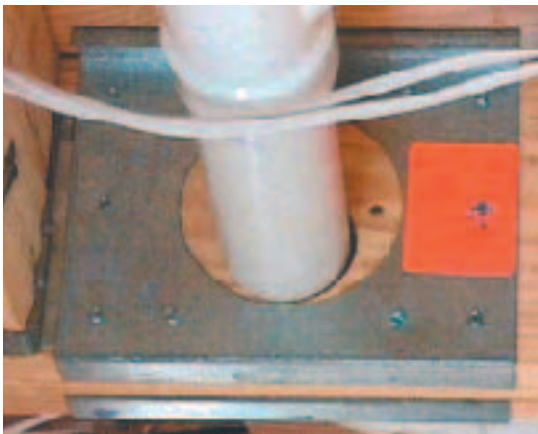


Put It There

Now you can put the plumbing where it was originally supposed to go. The Metwood *floor joist patch kits* allow large holes to be cut in floor joists where only the most laissez-faire builder would have done that before. The manufacturer cites BOCA and *International One- and Two-Family Dwelling Code*

approvals. Check with your code official first. The 2x10 reinforcer allows up to a 6-inch hole to be placed in the center of the joist. Spans and other conditions may restrict the use of the product. The 2x10 joist reinforcer goes for \$8.95.

Contact: Metwood, 819 Naff Rd., Boones Mill, VA 24065, 800/638-9663, www.metwood.com.



Sometimes It's Easy Being Green

Builders who have an interest or a livelihood in environmentally responsible construction can purchase a CD archive of *Environmental Building News*. The new software



includes all issues of the monthly newsletter from the first issue in 1992 through 2000. The single CD is subject searchable and provides manufacturer contacts for more than 450 products featured in the newsletter. The EBN Archives is compatible with both Windows and Mac formats. Price is \$149, or \$95 for EBN subscribers. Upgrades from prior editions cost \$79, or \$37 for subscribers.

Contact: Environmental Building News, 122 Birge St., Suite 30, Brattleboro, VT 05301, 802/257-7300, www.BuildingGreen.com.

Products

New Saw Lights the Way

If your eyesight isn't as good as it used to be, Makita may be able to help. The new 5007FK circular saw has all the same features as Makita's tried-and-true 5007NB plus one addition — an LED light built into the tool housing to illuminate the cut line. The maker claims the light does not obstruct vision and will not interfere with the cut line. The bulbs are expected to outlast the saw, according to Makita. A separate on/off switch allows the light to be controlled by the operator. The 5007FAK is the same saw with an electric brake. Both saws come with a one-year limited warranty.



Street price is about \$130.

Contact: Makita USA,
14930 Northam St., La
Mirada, CA 90638,
800/462-5482,
www.makitatools.com.

Gutter Cleaning Solution

Cleaning gutters has always been a chore that most people would avoid, given the option. At least it can be easier with the Tilt 'N Clean Rain Gutter System. Even second-story gutters can simply be dumped out by rotating the gutter on its patented bracket, according to the manufacturer. The system is operated by a telescopic pole that unlocks the gutter from its normal rain-carrying position and rotates it, emptying the gutter of debris.



Stubborn debris can be scraped out with the pole or left to dry and blow away. The company has made the downspout removable for cleaning, as well, and that can also be accomplished from the ground. Prices start at \$2.35 per foot including components.

Contact: Tilt 'N Clean, 15 E. Crane Rd., Pottstown, PA 19464, 800/454-8458, www.tiltnclean.com.

Circular Saw Dust Control

Builders who've installed fiber-cement products will attest to the clouds of dust generated by cutting them with a circular saw. Shave Away Europe's new Saw Muzzle could be a big help to folks who prefer not to spoil their lunch by eating a pound of dust before noon. The muzzle clamps to the front edge of the saw and creates a dust port that connects to a portable shop vac. The Saw Muzzle installs in less than three minutes and doesn't obstruct visibility, according to the manufacturer. Attached to a 1½-hp shop vac equipped with a dry-wall dust bag, the muzzle is said to collect 95% of the dust generated by cutting. The adapter fits all popular wormdrive saws. The cost is around \$60.



Contact: Shave Away Europe, 837 Cornish Dr., San Diego, CA 92107, 619/223-2154, www.dustmuzzle.com.

New I-Joist Makes Mechanicals Easier

Running forced-air ductwork just got easier with the introduction of Georgia-Pacific's Wide Open Wood I Beam Joist. GP's new 16-inch-deep floor joist has two 11¾-inch precut round holes and one 11¾x16-inch oblong hole for easy installation of mechanical systems. The joists come in lengths from 14 feet to 24 feet and have GP's signature 2½-inch flange. They can be field trimmed and are marked to keep the hole alignment consistent. Along with the other advantages of engineered I-joists, like lightweight, longer spans, and consistency, the Wide Open joist should speed up mechanical installation. Lineal-foot pricing is said to be slightly higher than comparable I-joists without the holes. The products are currently available only in the eastern U.S. GP says western distribution is scheduled for some time in 2002.



Contact: Georgia-Pacific Corporation, 133 Peachtree St., Atlanta, GA 30303, 800/284-5347, www.gp.com.

Products

Vinyl Window Adds Decorative Units

Kolbe Vinyl Windows has introduced a line of *decorative windows* to its already extensive vinyl line. The



windows have a jamb thickness of 4⁹/₁₆ inches and an integral, pre-punched vinyl nailing fin. Many shapes are available: octagons, full circles, gothics, circle tops, ovals, and segment head units. In art-glass designs, the decorative panel is placed between clear-glass panes for easy cleaning. Extension jambs are available in wood or white vinyl, and casing is available in oak or pine. List prices

range from \$327 to \$742 without options.

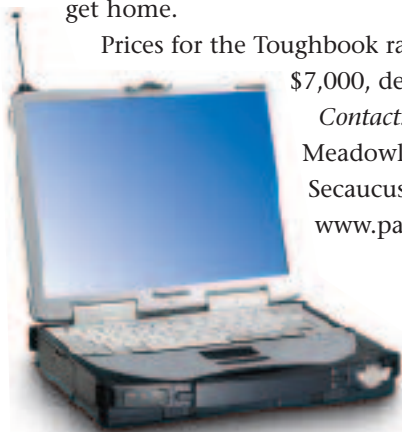
Contact: KVVW, 1211 Depot St., Manawa, WI 54949, 800/955-8177, www.kkvw.com.

Tough Notebook for Tough Conditions

The Panasonic *Toughbook 28* laptop computer looks like it could stop a bullet. The magnesium shell is designed to keep things working when the going gets tough. With wireless technology built in, you can check e-mail or surf the web while on the job site. The Toughbook features a Pentium III processor and 256MB of SDRAM. The 30-gig hard drive allows plenty of room for design software and bookkeeping functions. The only drawback to such a cool rig: It might be tough to keep away from your kids when you get home.

Prices for the Toughbook range from \$4,700 to \$7,000, depending on features.

Contact: Panasonic, 50 Meadowlands Parkway, Secaucus, NJ, 800/662-3537, www.panasonic.com.



Deeper-Cutting Concrete Saw

Builders and remodelers who've had the unfortunate experience of having to cut a retrofit window or door opening in a masonry wall will appreciate ICS's *613GC cutoff saw*. It resembles a traditional chainsaw and has a 12-inch depth of cut, allowing the operator to cut through 10-inch concrete in one pass, according to the manufacturer. The diamond chain provides another advantage over circular blades: Overcuts at corners can be eliminated. A water supply is required to cool the chain and keep dust down.

A 5.7-horsepower two-stroke engine with a compensating carburetor powers the saw. ICS claims that the new tool can cut reinforced concrete, brick, block, and stone. At 21 pounds, it weighs about as much as a traditional cutoff saw.

It retails for \$1,495, about 50% more than a traditional 14-inch cutoff saw, but the additional depth of cut might be worth it.

Contact: ICS, Blount, Inc., 4909 S.E. International Way, Portland, OR 97222, 800/321-1240, www.icsbestway.com.



Old Flooring for New Spaces

Now that 100-year-old rustic patina can be accomplished in days not decades, Yesteryear Floorworks announces its *Bunkhouse Plank* line of flooring. Complete with all the character one would expect — nail holes, dark color, weathered cracks, knots, and even knotholes — the material is from remilled boards and has a rough-sawn texture with a T&G profile. The ends are cut square and the boards have back relief. Standard widths include 3, 5, 7, 9, and 11 inches; custom widths are also available. Lengths are random 2-foot to 14-foot. Prices run about \$8 to \$15 per square foot.

Contact: Yesteryear Floorworks, 2331 E. Market St., York, PA 17402, 800/233-9307, www.agedwoods.com.

