

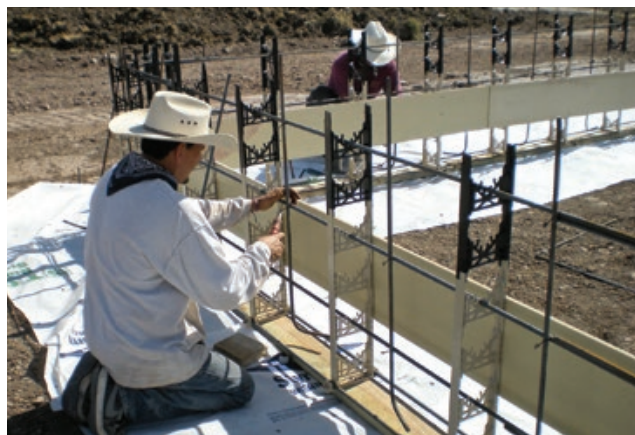
# Products



## Dry Veneer

*Versetta Stone* is a nonstructural stamped concrete veneer that's installed without mortar. It comes in 8-inch by 36-inch panels that interlock with the panels below and have 26-gauge galvanized nailing strips at the top. The strips are fastened to the wall with a nail gun or drill. Inside and outside corners and a wainscot cap are also available. The panels are made from a lightweight fiber-reinforced concrete that requires no structural reinforcement. Cost is \$12 to \$14 per square foot.

**Boral**, 800/255-1727, boralna.com.



## Formwork for Carpenters

The *Spider Tie* system was developed by a Utah contractor who had trouble getting small foundations done. Its intended market is builders and remodelers who want to do their own formwork. The system uses the open-web internal frame supports found in ICFs to support site-built plywood. The ties can be used to form flat or curved walls (the latter have two or more layers of thin plywood facing), or even lightweight concrete roofs. Cost is \$135 for a box of 100 ties, or a little over \$17 per running foot of 8-foot-high wall.

**Spider Tie**, 866/752-3950, spidertie.com.



## Rubber Roof

*EuroSlate* and *EuroShake* rubber roofing products contain 95% recycled content (mostly old tires), says the maker. They mimic slate tile and sawn cedar shakes, come in 36-inch and 40-inch-wide panels, and are held in place with standard roofing nails. An adhesive strip bonds successive courses to one another, and built-in tabs ensure correct exposure. The reported cost to the contractor is just under \$300 per square.

**G.E.M.**, 877/387-7667, euroshieldroofing.com.



## Fast Patch

Quikrete's *Zip & Mix* products can be mixed in the bag for small patching jobs. The line includes Vinyl Concrete Patcher, Hydraulic Water-Stop Cement, Anchoring Cement, and Mortar Mix. Unzip the pouch, add water, and knead the mixture to the desired consistency. Specific instructions — including how much water to use — are on the package. The products come in three-pound pouches that retail for \$6 to \$7.

**Quikrete**, 800/282-5828, quikrete.com.



## Deck Brightener

Accent lighting is a hot trend in deck design right now, thanks largely to the availability of affordable low-voltage LEDs. Fiberon's *Accent Lights* are recessed into the deck surface. Installation doesn't require an electrician; the lights are wired to a transformer, which is plugged into a standard outlet. A kit containing 10 lights, a transformer, the needed wire, and a remote-control dimmer costs \$230.

**Fiberon**, 800/573-8841, [fiberondecking.com](http://fiberondecking.com).



## Bulblike LED

Not only does the *Advanced Light* LED look like a traditional incandescent bulb, but it has a nearly identical light temperature. We tried it in a standard fixture, and had we not known better, we wouldn't have guessed it was an LED. The 13.5-watt bulb has a screw-in base and a lumen output equivalent to that of a 60-watt incandescent. It costs \$25, with a projected service life of 25 years if used three hours per day.

**3M**, 800/430-5000, [3m.com/led](http://3m.com/led).



## Recycled Pavers

Made mostly of recycled rubber and a little plastic, *Azek Pavers* feel firm but have some give. (The company claims ceramic plates didn't break when dropped on them as a test.) They fit into a 16-inch-square grid; pavers overlap from grid to grid to tie the system together. Three styles are available. Permeable and Standard Landscape pavers are for patios, walkways, and driveways, and install over compacted sand; Resurface pavers have a thinner profile for use over existing slabs and roofs. Cost is \$8 to \$9 per square foot, which includes the grid.

**Azek**, 877/275-2935, [azek.com](http://azek.com).



## Wood-Grain Vinyl

We have to admit to being impressed by our sample of Harvey's *Better Grain* finish — it really does look like stained wood. Available for select vinyl windows in pine, red cedar, and dark oak, *Better Grain* is applied to the vinyl in a two-step process — color first, then a grain-pattern overlay. Double-hung prices start at \$150; accessory windows range from \$115 to \$225. The company also charges a \$225 setup fee for each order, so this option is most cost-effective when ordering multiple windows.

**Harvey Building Products**, 800/598-5400, [harveybp.com](http://harveybp.com).



# Products



## PEX Alternative

Zurn Pex hy-PE-RTube polyethylene raised temperature resistance (PE-RT) tubing is an alternative to cross-linked polyethylene (PEX). Its main advantage for installers is greater flexibility, which allows it to lay flat during installation. It also has a five-layer construction — inner and outer PE-RT layers and an ethylene vinyl alcohol core surrounded by two adhesive layers — that prevents air infiltration, protecting cast-iron boiler elements from rust. Cost is competitive with PEX, or around \$26 to \$31 per foot for 1/2-inch tubing.

**Zurn Engineered Water Solutions**, 800/872-7277, zurn.com.



## Markable Coating

Sherwin-Williams' *Dry Erase Coating* is a clear, glossy coating that can be written on with a dry-erase marker, then wiped clean with a rag. The two-component product is meant for professional application, as it must be agitated at low power for two minutes after mixing. It can be applied over any painted surface in good condition, has a 1 1/2-hour pot life, and takes three or more days to dry. Coverage depends on surface porosity but ranges from 200 to 400 square feet per gallon. A one-gallon kit costs \$500 and a quart kit \$150, which works out to \$1.25 to \$2.50 per square foot.

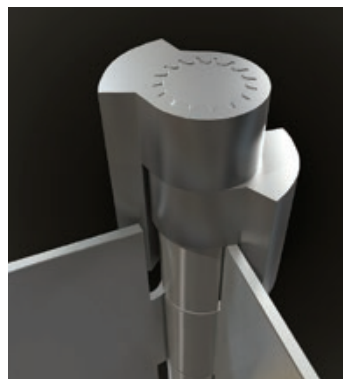
**Sherwin-Williams**, 800/474-3794, sherwin-williams.com/home-builders.



## Residential Condensing Tank

Rheem says its *High-Efficiency Condensing PDV Water Heater* represents the first use of high-efficiency condensing technology in a residential-class tank heater. (Residential models fire at a maximum 75,000 Btu and must have a safety feature called flammable vapor ignition resistance.) The unit has an energy factor of 0.80 and comes in 40,000-Btu gas and 36,000-Btu propane versions. Its high efficiency is achieved in part by heat-exchanger coils that route exhaust gas through the tank twice. The unit costs \$1,400 to \$1,600, not including installation; estimating operating cost is \$228 per year.

**Rheem**, 800/621-5622, rheem.com.



## Bumperless Doorstop

The *Door Saver II* hinge pin serves as a doorstop. It has two interlocking cams at the top that engage the hinge leaves. Since the distance between the two cams is adjustable, you can set different opening angles. The device eliminates the rubber bumper, so it works even if there is no casing (such as for a door recessed in an opening). It installs like a standard hinge pin and works with 3 1/2-inch or 4-inch hinges (though the pin protrudes past the bottom of a 3 1/2-inch hinge). It costs \$6.

**Perfect Products**, 877/366-7728, doorsaver.com.