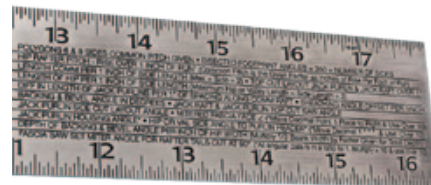
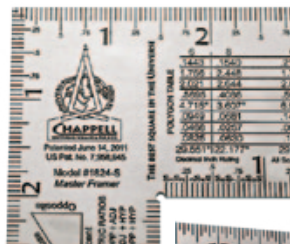


Toolbits

The Ultimate Framer

A standard framing square lets you calculate basic cuts on common, hip, and jack rafters, but the tables on the Chappell *Master Framer* let you calculate cuts for all sorts of complex roof frames. That includes all cuts needed for an unequal pitched roof, as well as for a hexagonal or octagonal roof. The stainless-steel tool comes with a detailed instruction book, and its inventor says an experienced framer can become proficient using it in a couple of hours. An 18-inch-by-24-inch model costs about \$120, and a 12-inch-by-18-inch one costs \$85.

Chappell Universal Square & Rule Co., 207/935-3720, chappellsquare.com.



X-Ray Vision

DeWalt is adding a *Hand-Held Radar Scanner* to its 12-volt Max lithium-ion system. Using radar sensing technology, the tool detects and identifies wood, ferrous and nonferrous metal, live electric wires, and PVC behind wall surfaces, then displays the detected objects on a screen. It can scan through drywall, plywood, concrete, marble, and ceramic tile at a sensing depth of up to 3 inches. It will be available in May for approximately \$300.

DeWalt, 800/433-9258, dewalt.com.



Compliance in a Pail

The *Li'L Bucket of Safe-Tie* has everything a worker needs to be OSHA-compliant up on the roof, including a steel anchor, anchor screws, a 50-foot polypropylene lifeline with a built-in shock absorber, and a universal-fit harness with five adjustment points for different body types. The equipment will work on any pitch roof and can handle up to 310 pounds. An impact indicator deploys on the harness if there's a fall, after which the harness must be taken out of service. Cost is around \$100.

Guardian Fall Protection, 800/466-6385, guardianfall.com.



Cordless Power

Hilti claims that its *TE 2-A18 Rotary Hammer Drill* delivers the same power as its TE 2 corded model. The tool has a high-efficiency motor, a drop-resistant housing, an LED work light, and a lithium-ion battery, and is comparable in weight to the corded version. Optimum drilling diameter range is $\frac{3}{16}$ inch to $\frac{3}{8}$ inch. A compact model is also available. Professionals who buy either drill get unlimited battery replacements for two years. The TE 2-A18 costs about \$500.

Hilti, 800/879-8000, us.hilti.com.