

BY LAUREN HUNTER

## 1. PVC Trim-Board Screw

Simpson Strong-Tie's PVC Trim-Board screw, engineered for low-torque installations of PVC trim and fascia, has a triple-threaded design, a box-shaped cutter head, and a flat underhead to improve pull-through resistance and leave a clean finish. A T-20 bit is included; the screw's six-lobe design helps reduce cam-outs for longer bit life. Look for online pricing around \$11 for a 70-count box of the paintable, white, exterior-grade screws. [strong-tie.com](http://strong-tie.com)



## 2. Multifunctional Flooring Adhesive

A single-component 5-in-1 adhesive, Supreme Green DriTac 7800 offers subfloor moisture control with no testing required, sound control, and isolation of old cutback adhesive. The material also suppresses cracks and includes a bond-only option. Designed for engineered, solid-wood, and bamboo flooring with no restriction on plank size, Supreme Green easily cleans off hardwood flooring wet or dry. Its "green" claims include zero isocyanates, VOCs, or solvents. Pricing for contractors would be approximately \$1.25 per square foot. [dritac.com](http://dritac.com)

2



3



## 3. Fine-Ground Porous Hardscaping

Porous Pave has refined the size of recycled-rubber chips used in its surfacing. Chips now range from 1/8 to 1/4 inch, creating a porous, durable, and flexible pour-in-place permeable paving material. The finer grind retains 93% of the porosity of the coarser material, which is still available for some applications. Ideal for courtyards, patios, and walkways, Porous Pave XL offers a 50/50 blend of rubber chips with aggregate for installed thickness of 1 to 2 inches. Porous Pave XLS has a 100%-recycled-rubber chip content. The \$5 average per-square-foot price depends on material and thickness. [porouspaveinc.com](http://porouspaveinc.com)

## 4. Keep Cords Connected

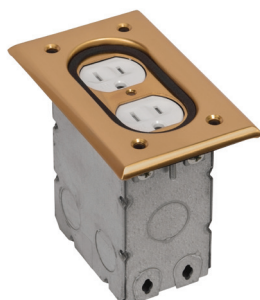
Designed for the jobsite, the Twist & Seal Maxx cord protector accommodates commercial-grade electrical cord connections up to 10 gauge, while automatically adjusting to smaller-diameter cords. The patented product helps prevent electrical shocks, accidental disconnections, and other hazards. A model for homeowner-style extension cords, the Cord Protect, is priced at \$9; Twist & Seal Maxx pricing is being determined, with availability this summer. [twistandseal.com](http://twistandseal.com)



5



6



7



8



### 5. New Mini-Split Options

Johnson Controls introduces seven new duct-free mini-split air conditioners for its York brand. The Z Series is a 30.5 SEER single-zone system. Other models include a 20 SEER R Series unit, and the 22 SEER multi-zone W Series featuring a central controller that can operate up to 16 indoor units. Wired and wi-fi communication platforms are available. Operating temperatures range from -22°F to 129°F, and capacities range from 3/4 ton to 4 tons. Check with your dealer for pricing. [york.com](http://york.com)

### 6. Easy-Install Floor Box

Ideal for open-concept living spaces with any floor covering, the Steel City Residential Floor Box offers a single-gang configuration and flush-to-floor installation in wood subfloors. A kit available for new and old-work installations includes a UL- and CSA-certified 15A, 125V tamper-resistant receptacle, installation instructions, and a template for the floor opening. The metallic outlet box has 1/2-inch knockouts, pry-outs, and integral cable clamps for NM sheathed cable, as well as a stamped, one-piece brass cover and a neoprene gasket. Priced around \$60 at retail; ask about contractor pricing. [tnb.com](http://tnb.com)

### 7. Outdoor Kitchen Introductions

New appliances and storage from Coyote Outdoor Living offer versatile options for outdoor kitchens. The C1CH36 drop-in grill, priced at \$1,600, has more than 875 square inches of cooking area and burns either charcoal or wood chips. Meanwhile, the ceramic Asado Smoker (\$1,260) lets grillmasters smoke, bake, sear, or grill without modifier accessories. Storage options include a single-door, two-drawer combination (\$650), a dry pantry with drawers (\$900), a pull-out ice chest (\$700), and a pull-out trash and recycling unit (\$550). Confirm pricing with dealers. [coyoteoutdoor.com](http://coyoteoutdoor.com)

### 8. Shaker Closet Design

Simple white meets sleek Shaker in the latest closet offering from Woodtrac by Sauder. The flat white Shaker-style panels bring a transitional or contemporary aesthetic to closets and other storage areas with shelving, door, and drawer combinations. Solid shelving improves storage in pantries and bathrooms with wipe-clean surfaces that keep spills from reaching the floor. Pricing will vary by product selections. [woodtrac.com](http://woodtrac.com)



## 9. Shower With Storage

Sterling's Store+ shower has eight pre-molded locations to accommodate dishwasher-safe accessories that snap in and out of place with no tools. The walls have semi-recessed corner storage niches and molded foot ledges. Each storage shower includes a rimmed shelf/soap dish, storage bin, towel bar, and shower hook; additional accessories are available. The shower pan itself has a low 3-inch threshold and improved water containment. Look for list prices starting between \$680 and \$850, depending on size and features. [sterlingplumbing.com](http://sterlingplumbing.com)

## 10. Tricked-Out Garage Door Opener

Ryobi has entered the garage-door market with a model that does way more than raise and lower a door. The base unit offers a 2-hp motor, a wall controller, a wireless keypad, two remotes, a safety sensor, and motion-controlled overhead LED lighting. The unit plugs into a standard outlet, but also accommodates a One+ battery that gets charged when not in use, and can operate as backup power for up to 100 open-and-close cycles. Other creative modules include a laser-light parking assist, retractable cord reel, Bluetooth speaker, a fan, and a forthcoming carbon monoxide detector. The wi-fi-compatible Ryobi One+ Garage Door Opener retails for \$240 and accessory modules range from \$45 to \$65. [ryobitools.com](http://ryobitools.com)

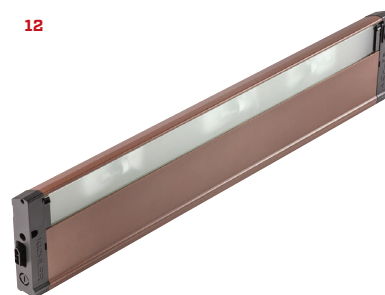
10



11



12



## 11. Power for the Jobsite

Weighing less than 53 pounds and featuring an ergonomic handle, Hitachi's EC99S air compressor is easy to transport around the jobsite. The 4-gallon twin-stack unit has an oil-lubricated cast-iron pump and thermal overload protection for the 15-amp direct-drive induction motor. The compressor can run multiple nailers depending on the application, by offering 3.1 cfm at 90 psi and 3.05 cfm at 100 psi. The locking regulator and 105 psi-on/135 psi-off pressure switch means users won't have to worry about pressure wander or pressure-starved tools. Other features include a ball-valve drain cock, shock-absorbing feet, and a factory-installed universal quick coupler. Priced at \$200. [hitachipowertools.com](http://hitachipowertools.com)

## 12. Light Line

The new Lighting Systems line from Kichler includes tape lighting, undercabinet task lighting, step or hallway lighting, and more. Items like low-voltage tape light and hard strips work in conjunction with power supplies, including the line's new dimmable power supply, to efficiently convert line voltage into the appropriate usable power. Undercabinet fixtures have a built-in driver to help convert power, so they can be directly wired into line voltage or run together. An optional plug is also available. Contact Kichler for pricing. [kichler.com](http://kichler.com)